

NATIONAL ALFALFA & FORAGE ALLIANCE



[www.alfalfa.org](http://www.alfalfa.org)

What does a little rascal have to do with  
the 3rd most valuable crop in the U.S.?



## National Alfalfa & Forage Alliance 2<sup>nd</sup> Annual D.C. Fly-In

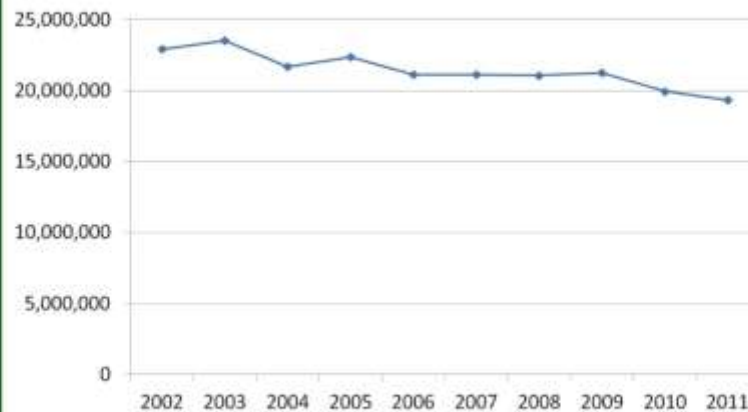
Tuesday, February 14 - Thursday, February 16, 2012

Alfalfa is key to sustainable agricultural systems and is an economic engine in rural communities - its value for soil conservation, nitrogen fixation, energy savings, crop rotation, and wildlife habitat is unsurpassed.

Alfalfa must offer a competitive value for farmers in order to provide these benefits and maintain or expand its acreage base. Being recognized in policy and research funding decisions is critical in keeping pace with other cropping choices.



## U.S. Acreage 2002-2011 (-15.7%)



Source: National Agricultural Statistics Service (NASS)

## FY '12 USDA Research Expenditures by Crop

Crop	\$million	Scientist Years	# of Projects
Corn	44.6	109.9	108
Cotton	42.6	104.2	68
Wheat	42.1	95	145
Soybean	34.5	82.9	84
Apple	9.9	24	26
Tomato	8.5	19.7	43
Sorghum	8.4	22.3	27
Greens/leafy veg	6.9	15.4	19
Alfalfa	3.7	9.9	14
Sunflower	3.2	8.1	8
Carrot	0.8	1.6	5
Canola	0.7	1.6	5

Source: Agricultural Research Information System



## Farm Bill Requests

Alfalfa is key to sustainable agricultural systems and is an economic engine in rural communities - its value for soil conservation, nitrogen fixation, energy savings, crop rotation, and wildlife habitat is unsurpassed.

Alfalfa must offer a competitive value for farmers in order to provide these benefits and maintain or expand its acreage base. Being recognized in policy and research funding decisions is critical in keeping pace with other cropping choices.

### Unprecedented... Alfalfa Specifically Mentioned in the Farm Bill Research Title

NAFA was successful in securing language in the 2008 Farm Bill authorizing an alfalfa/forage research program.

"(50) ALFALFA AND FORAGE RESEARCH PROGRAM.—Research and extension grants may be made under this section for the purpose of studying improvements in alfalfa and forage yields, biomass and persistence, pest pressures, the bioenergy potential of alfalfa and other forages, and systems to reduce losses during harvest and storage."

### Conservation Stewardship Program

2008 Farm Bill had new language providing for additional payments to producers who adopt "resource-conserving crop rotations."

#### "Subchapter B – Conservation Stewardship Program

##### (f) SUPPLEMENTAL PAYMENTS FOR RESOURCE-CONSERVING CROP ROTATIONS.—

(1) AVAILABILITY OF PAYMENTS.—The Secretary shall provide additional payments to producers that, in participating in the program, agree to adopt resource-conserving crop rotations to achieve beneficial crop rotations as appropriate for the land of the producers.

(2) BENEFICIAL CROP ROTATIONS.—The Secretary shall determine whether a resource-conserving crop rotation is a beneficial crop rotation eligible for additional payments under paragraph (1), based on whether the resource-conserving crop rotation is designed to provide natural resource conservation and production benefits.

(3) ELIGIBILITY.—To be eligible to receive a payment described in paragraph (1), a producer shall agree to adopt and maintain beneficial resource-conserving crop rotations for the term of the contract.

(4) RESOURCE-CONSERVING CROP ROTATION.—In this subsection, the term 'resource-conserving crop rotation' means a crop rotation that—

(A) includes at least one resource conserving crop (as defined by the Secretary);

(B) reduces erosion;

(C) improves soil fertility and tilth;


(D) interrupts pest cycles; and

(E) in applicable areas, reduces depletion of soil moisture or otherwise reduces the need for irrigation."

## Authorizing Language

Located in the *"High Priority Research and Extension Areas"* of the 2008 Farm Bill (Section 7204):

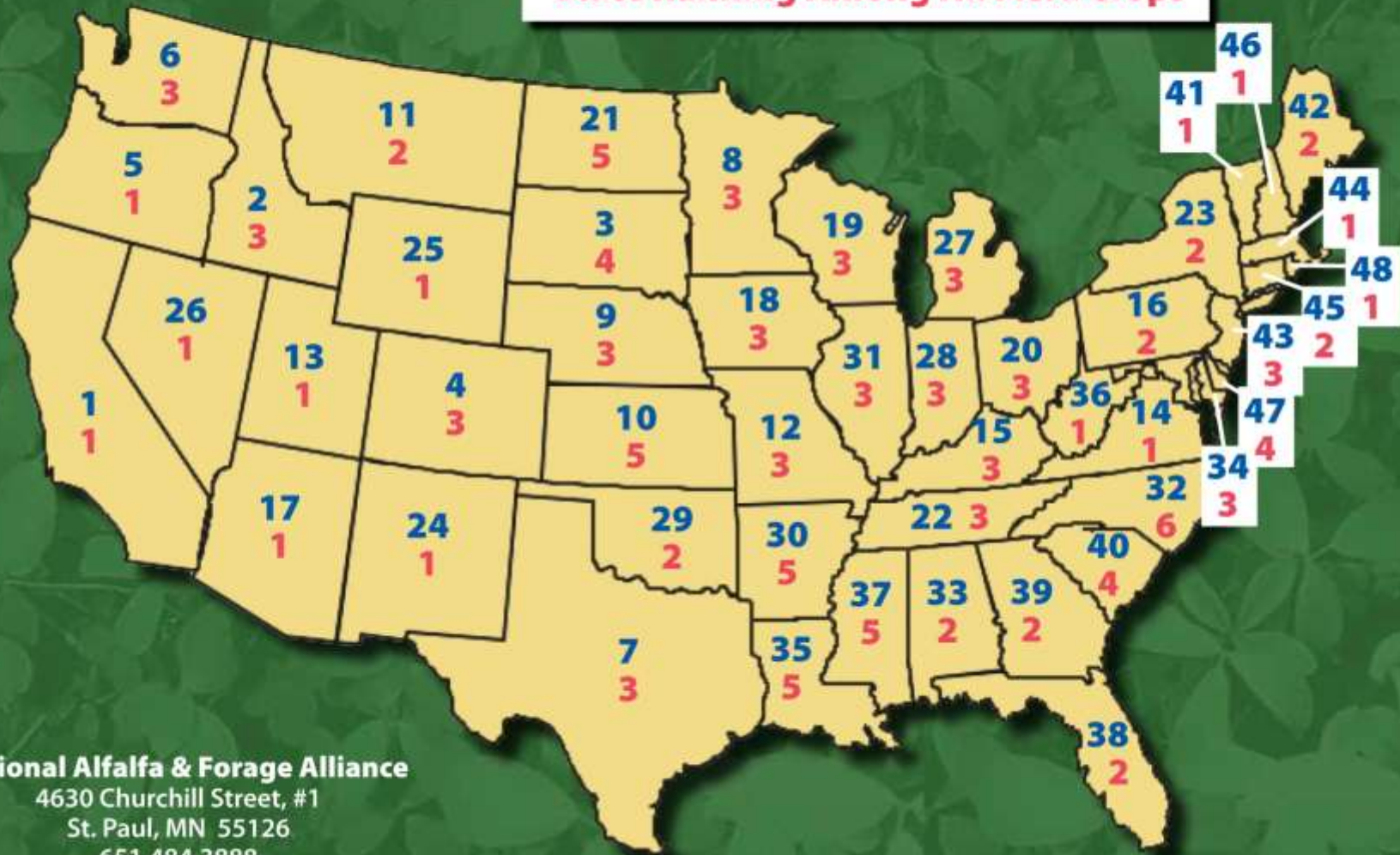
"(50) ALFALFA AND FORAGE RESEARCH PROGRAM. Research and extension grants may be made under this section for the purpose of studying improvements in alfalfa and forage yields, biomass and persistence, pest pressures, the bioenergy potential of alfalfa and other forages, and systems to reduce losses during harvest and storage."



**Forage is the  
3rd most valuable  
field crop in the US!**

# Value of Forage Production

**National Ranking**  
**State Ranking Among All Field Crops**



**National Alfalfa & Forage Alliance**

4630 Churchill Street, #1

St. Paul, MN 55126

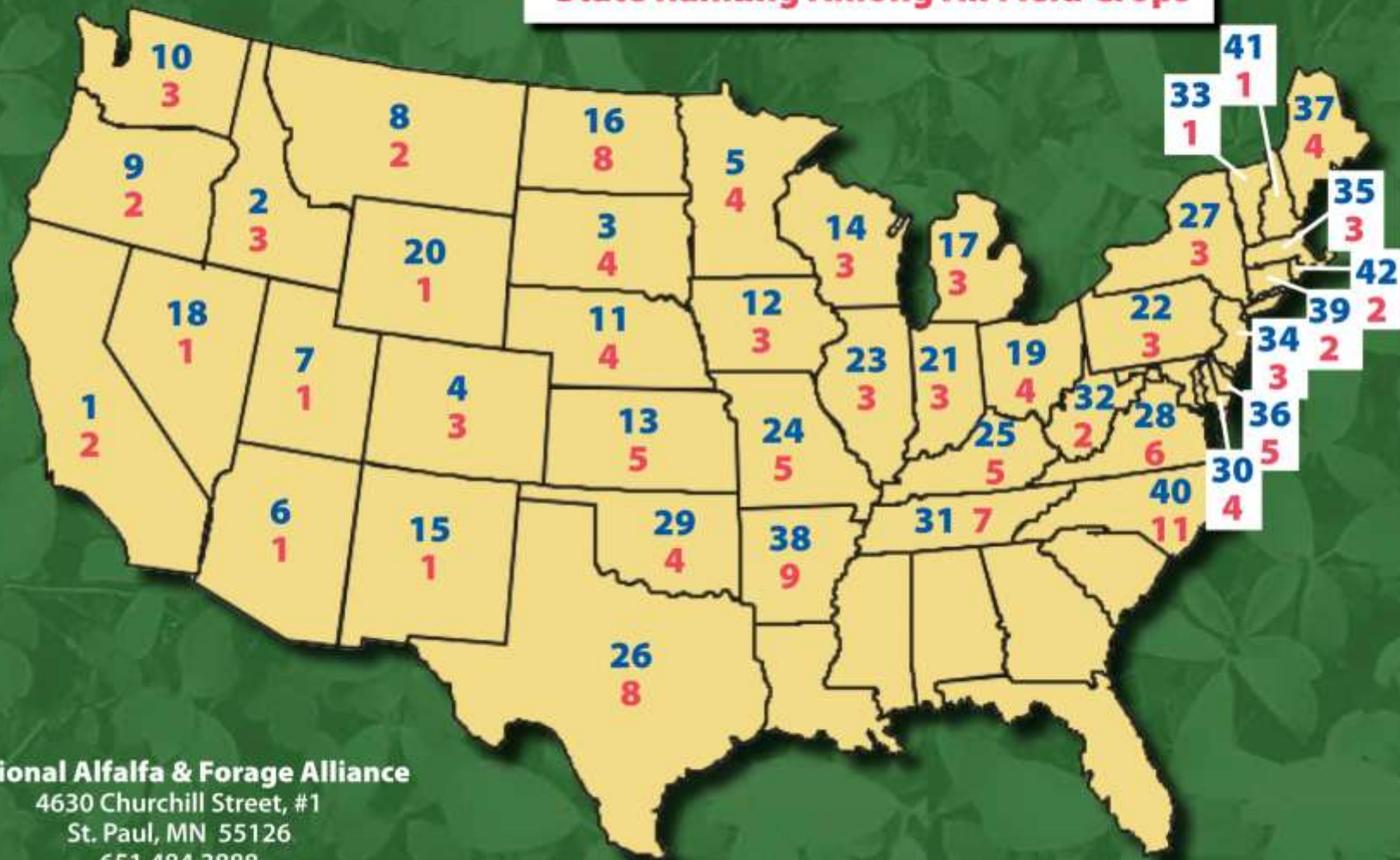
651.484.3888

nafa@comcast.net

Source: USDA-NASS 2011

# Value of Alfalfa Production

**National Ranking**  
**State Ranking Among All Field Crops**



**National Alfalfa & Forage Alliance**

4630 Churchill Street, #1

St. Paul, MN 55126

651.484.3888

nafa@comcast.net

Source: USDA-NASS 2011

# Senate Ag Approps Mark

Agriculture and Food Research Initiative.—The Committee recommendation includes \$297,956,000 for the Agriculture and Food Research Initiative [AFRI].

...the Committee continues its direction that not less than 10 percent of the competitive research grant funds be used for USDA's agricultural research enhancement awards program...

Alfalfa and Forage Research.—The Committee notes that research into alfalfa and forage holds the potential to increase alfalfa and forage yields, increase milk production, and improve forage genetics to increase biomass for the production of cellulosic ethanol. The Committee supports research into the improvement of yields, creation of new uses of alfalfa and forages for bioenergy, and the development of new storage and harvest systems.





# North American Alfalfa Improvement Conference

[Organization](#)

[Membership](#)

[Annual Conferences](#)

[Resources](#)

[Database](#)

[NAFA](#)

## Researcher Database

Last Name:

Company/Agency/University:

Sector:

Primary Research Activity:

Secondary Research Activities:

The NAAIC website is maintained by the National Alfalfa & Forage Alliance.

American Alfalfa Imp...  
 naaic.org/getMember.php?id=3620 - Google ...  
 naaic.org/getMember.php?id=3620

marks now...

me: JoAnn Lamb  
 mpany: USDA-ARS  
 dress:  
 11 Borlaug Hall  
 991 Upper Buford Circle  
 t. Paul, MN 55108

one: 612-625-0260  
 x: 651-649-5058  
 ail: joann.lamb@ars.usda.gov; joannlamb@umn.edu

mary Activity: Breeding  
 onary Activities: Agronomy;  
 ctor: Alfalfa;

[Close window](#)



[Organization](#)   [Membership](#)   [Annual Conferences](#)   [Resources](#)   [Database](#)   [NAFA](#)

### Researcher Database

1 member(s) found

Name	Company	Activities
<a href="#">Lamb, JoAnn</a>	USDA-ARS	Agronomy

The NAAIC website is maintained by the National Alfalfa & Forage Alliance.

nafa@comcast.net